



ACCIDENT CHECKLIST

- ✓ **CHECK FOR INJURIES AND CALL 911 IF NECESSARY** You should never move an injured person unless he or she is in immediate danger.
- ✓ **TAKE PICTURES TO DOCUMENT THE SCENE** Only take pictures if you can do so safely. Include all vehicle damage and the surroundings, and upload pictures to **geico.com** after you report the loss.
- ✓ **EXCHANGE AND RECORD INFO** Don't discuss who is at fault. Only disclose your name, your insurance company, your policy number and GEICO's phone number to the other parties (other than the police). Write down:

DATE AND TIME

LOCATION

POLICE REPORT NUMBER

OTHER DRIVER'S LICENSE PLATE NUMBER, INSURANCE & CONTACT INFO
- ✓ **GET YOUR VEHICLE TOWED** If your car isn't drivable, call GEICO to report the loss. GEICO will help you get your vehicle towed quickly.
- ✓ **LET GEICO KNOW** Our helpful agents are available 24/7 to help guide you through the process. Report a claim by calling **866-351-0266**, on **geico.com**, or via the GEICO Mobile App.



Step 2. Staple here (x3)

Step 1. Fold here

Step 3. Fold here

YOUR ON-THE-ROAD CAR KIT



KEEP THIS
IN YOUR
GLOVE BOX!

AN EXPERT GUIDE TO YOUR AUTO POLICY
+ SMART DRIVER TIPS AND TRICKS

GEICO

MAKE IT EASY: DOWNLOAD THE APP

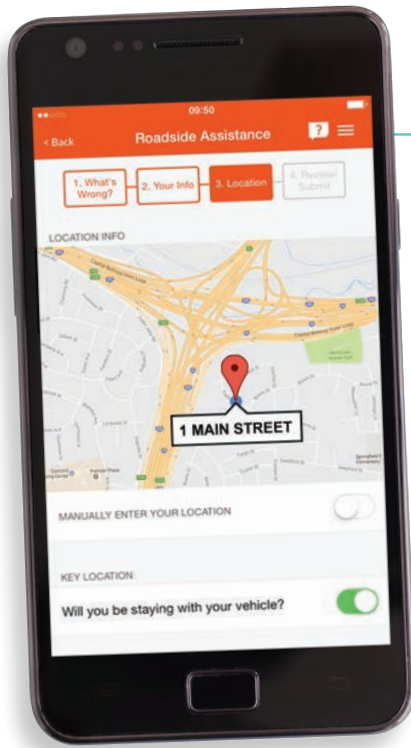
PROOF OF INSURANCE

is available on your phone or tablet in the form of **digital ID cards**.

MANAGE YOUR POLICY

by paying a bill, adding a driver or vehicle, or changing coverages.

FIND GAS locates the lowest real-time prices of fuel nearby—and gives you directions there.



ROADSIDE ASSISTANCE

Flat tire? Ran out of gas? Locked out?

Our Emergency Roadside Service (ERS) can help.

Log in to your GEICO Auto Policy or call **800-424-3426**

to get a quote or add it to your policy.

NUMBERS TO KNOW

SERVICE AND CLAIMS **866-351-0266**

EMERGENCY ROADSIDE SERVICE **800-424-3426**

PAY BY PHONE **800-932-8872**

HOMEOWNERS OR RENTERS QUOTE **800-841-0723**

**LOSE YOUR
PAPER
INSURANCE
CARD?**

NO WORRIES!

Download a mobile version anytime using our app. And don't forget to sign up for paperless policy and billing!



WE SEE
MORE SAVINGS
IN YOUR FUTURE



WHETHER YOU'RE GETTING MARRIED,
BUYING A HOME OR ADOPTING A PET,
GEICO'S HERE TO GROW WITH YOU.



ON THE ROAD

MOTORCYCLE
AND ATV
COMMERCIAL
AUTO
RIDESHARING
RV
BOAT + PERSONAL
WATERCRAFT



AT HOME

RENTERS
PET
HOMEOWNERS
AND MOBILE
HOME
CONDO AND
CO-OP
FLOOD



FOR LIFE

JEWELRY
IDENTITY
PROTECTION
TRAVEL
PERSONAL
UMBRELLA
INSURANCE
LIFE INSURANCE

WELCOME TO



THANK YOU FOR BECOMING PART
OF THE GEICO FAMILY!

You have a lot of options when it comes to auto insurance, and we're honored that you've chosen us to protect you behind the wheel. To help you get started, we've created this useful car kit that you can stash in your glove compartment. Inside, you'll find everything you need while on the road, including explanations of essential insurance terms, an illustrated, step-by-step guide to changing a tire, surprising ways to save on insurance and a handy checklist that shows you what to do in case of an accident.

9 HELPFUL THINGS TO HAVE IN YOUR CAR



JUMPER CABLES



TIRE PRESSURE GAUGE



FIRST AID KIT



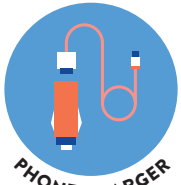
WATER & SNACKS



DISINFECTANT WIPES



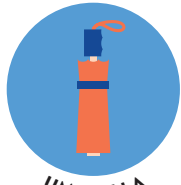
BLANKET



PHONE CHARGER



REUSABLE TOTE BAGS



UMBRELLA

DID YOU KNOW?



YOU CAN USE KITTY LITTER TO GET YOUR CAR OUT OF THE SNOW OR MUD! Clear loose snow or mud around your tires, then sprinkle kitty litter around your tires for traction.

3.

TERMS

IN PLAIN ENGLISH!



MECHANICAL BREAKDOWN INSURANCE (MBI) Covers repairs to all mechanical parts of the car, protecting you from expensive repair bills after your warranty expires.



PERSONAL INJURY PROTECTION May pay for your passengers' and your medical treatment, lost wages or other accident-related expenses, no matter who caused the accident.



PROPERTY DAMAGE LIABILITY COVERAGE Pays for damage to someone else's vehicle or property resulting from an accident for which you are at fault. May provide legal defense.



RENTAL REIMBURSEMENT Or "Transportation Expense," this optional coverage helps pay rental car costs when your insured vehicle is disabled owing to a covered accident or loss.



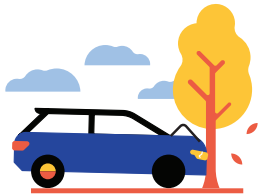
UNINSURED MOTORIST COVERAGE May pay for your injuries or property damage caused by an uninsured motorist or, in some states, an unidentified driver.

8.

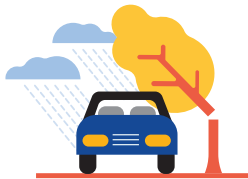
TOP 10 INSURANCE



BODILY INJURY LIABILITY COVERAGE Pays for damages to others for injury or death resulting from an accident in which you're at fault. May provide legal defense.



COLLISION COVERAGE Pays for damage to your car when it hits or is hit by another vehicle or object, or if the car overturns. Subject to the terms, limits and conditions of your policy contract.



COMPREHENSIVE PHYSICAL DAMAGE COVERAGE Pays for damage to your car that is not the result of a car accident. For example, theft, vandalism, flood, fire, animals or other covered perils.



DEDUCTIBLE The portion of a claim that you pay out of pocket. Budgeting tip: Opting for a higher deductible will lower your insurance premiums, so choose wisely.



EMERGENCY ROADSIDE SERVICE (ERS) If you have a flat tire or a dead battery, need to get towed, or get locked out of your car, we're there for you. It starts at only \$14 per year per vehicle.

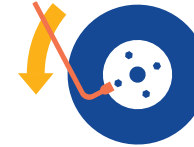
7.

FLAT TIRE FIX



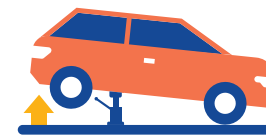
1

PARK ON A SAFE FLAT, HARD SURFACE OFF THE ROAD AND MAKE SURE TO PUT ON THE EMERGENCY BRAKE.



2

LOOSEN THE LUG NUTS HALF A TURN WITH A TIRE IRON, BUT DON'T TAKE ANY OF THEM OFF YET!



3

JACK UP THE CAR.

REMOVE THE LUG NUTS AND THE WHEEL.

4



PUT ON YOUR SPARE* AND PARTIALLY RESECURE THE LUG NUTS.

5



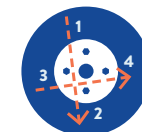
LOWER THE CAR.

6



FINISH TIGHTENING YOUR LUG NUTS. ALWAYS TIGHTEN TOP TO BOTTOM, LEFT TO RIGHT. (ORDER SHOWN)

7



***SPARES** come in a full-size version and a smaller "donut," which is meant to replace only a back tire. If you get a flat front tire, remove a rear tire and replace it with the donut. Then replace your front tire with the rear tire.

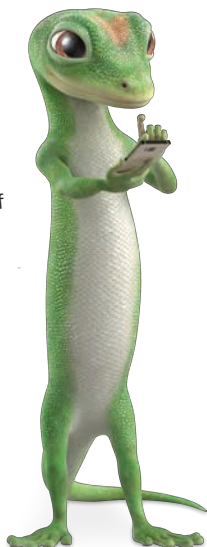
4.

SMART WAYS TO SAVE BIG

GO TO **GEICO.COM** FOR A FAST, FREE QUOTE FOR
RENTERS OR HOMEOWNERS INSURANCE.

DO YOU RENT?

Help safeguard all of
your possessions
with a renters
insurance policy.



COMBINE & CONQUER

Protect your
property and you could
score savings with
our Multi-Policy
Discount.

DO YOU OWN?

Whether it's a house or
a condo, the GEICO
Insurance Agency could
help protect your
biggest investment.

THERE'S A DISCOUNT FOR THAT?!

ALUMNI DISCOUNT

MILITARY AND FEDERAL DISCOUNT

GOOD STUDENT DISCOUNT

GOOD DRIVER DISCOUNT

MULTI-CAR DISCOUNT

FIND OUT ALL THE DIFFERENT WAYS YOU COULD SAVE AT
GEICO.COM/DISCOUNTS

5.

PAY PAINLESSLY



YOU'VE GOT OPTIONS.
PICK THE PLAN THAT
WORKS FOR YOU AT:
GEICO.COM/PAYMENTS



SET UP AUTOMATIC PAYMENTS

Stop worrying about your bills. Sign
up with Electronic Funds Transfer (EFT)
or your credit or debit card, and you'll
never be late again.



SPREAD YOUR PAYMENTS OUT...

Choose the number of installments
that work for your life—and budget.



...OR PAY IN FULL

Pay the full premium by the policy
effective date and you're done!
(And you'll avoid installment charges.)



GO GREEN

Sign up for paperless billing and do it
all online. eBill and ePolicy are great
ways to keep track of your payments
and policy documents.



DOWNLOAD OUR APP

Pay your bill anywhere, anytime, and sign
up for text alerts when payments are due.
Text* MOBILE to **43426** to download now.

*Message and data rates may apply.

6.